



Apron Twirl Dress

(top option included!)



This peasant style dress has a twirl skirt part and a cute apron which can be omitted if preferred. You can choose the sleeve lengths from short, $\frac{3}{4}$ or long sleeves. The sleeve hems can be left open or gathered with encased band elastic. Both options are cute!

An additional chart gives you cutting info for making **TOPS which will be without the apron.**

A sash can be added as well.

List of required materials:

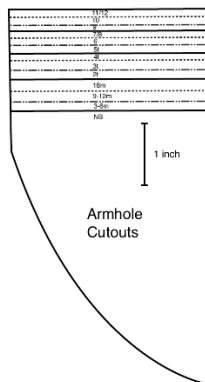
- Fabric
- Sewing machine
- Serger (optional)
- Straight pins
- Safety pin
- $\frac{1}{4}$ " band elastic
- Iron
- Threaded Hand sew needle
- 3 decorative buttons (optional)

Seam allowance: $\frac{3}{8}$ " unless stated otherwise

To print the templates:

Set your printer without scaling and double check the 1 inch print scale.

These are the printed out templates:



Cut out the desired size.

To cut your fabric – measurements are in inches:

Total yardage is based on directional print fabric. You will likely need less when using a non-directional print.

- Prewashing your fabric might prevent shrinkage! Dry and press your fabric before cutting. Shrinkage of 0.5 inch is calculated into the yardage!
- Measurements are based on 44" wide fabric with directional print. For non-directional fabric you will use less.
- The measurements are for width (going across fabric width) = W x length (measured vertically) = L

Dress (with TOP length cutting info) and apron sizing chart:

Size	Appr. Dress length from shoulder to hem	Cut 2 for bodice Width x Length	Yardage for bodice	Cut 2 for skirt W x L	Yardage for skirt	Cut 1 for apron W x L	Yardage for apron	TOP length: take off the following inches from the SKIRT lengths
NB	13 ¼"	10.5"x6"	1/4 yd	18"x7"	1/4 yd	9"x5"	1/4 yd	2.5"
3-6m	14"	11"x6 ¼"	1/4 yd	20"x8"	1/3 yd	10"x6"	1/4 yd	2.5"
9-12m	16.5"	12"x6.5"	1/4 yd	22"x11"	1/3 yd	10.5"x8"	1/4 yd	4"
18m	18.5"	12 ¼"x6 ¾"	1/4 yd	24" x 12 ¼"	3/4 yd	11"x9 ¾"	1/3 yd	4.5"
2t	19.5"	12.5"x7"	1/4 yd	26"x13"	3/4 yd	12"x10.5"	1/3 yd	4.5"
3t	20 ¾"	12 ¾"x7 ¼"	1/4 yd	28"x14"	1 yd	13"x11 ¼"	1/3 yd	5"
4t	22"	13"x7.5"	1/4 yd	30"x16"	1 yd	14"x13"	1/2 yd	7"
5	23.5"	13 ¼"x8"	1/4 yd	32"x17"	1 yd	15"x13 ¾"	1/2 yd	7.5"
6	24.5"	13.5"x8.5"	1/4 yd	34"x18"	1 1/8 yd	16"x14.5"	1/2 yd	7.5"
7	26"	14"x9"	1/3 yd	36"x20 ¼"	1 1/4 yd	17"x16"	1/2 yd	7.5"
8	27"	14.5"x9.5"	1/3 yd	37"x20 ¾"	1 1/4 yd	18"x17"	1/2 yd	7.5"
9	28"	15"x10"	1/3 yd	38"x21 ¼"	1 1/4 yd	19"x17.5"	1/2 yd	7"
10	27.5"	16.5"x10.5"	1/3 yd	39"x22"	1 1/4 yd	20"x17 ¾"	2/3 yd	7"
11/12	29"	18"x11.5"	1/3 yd	41"x23"	1 1/3 yd	21"x19"	2/3 yd	7"

*for making tops you want to adjust the yardage accordingly.

Sleeve sizing chart:

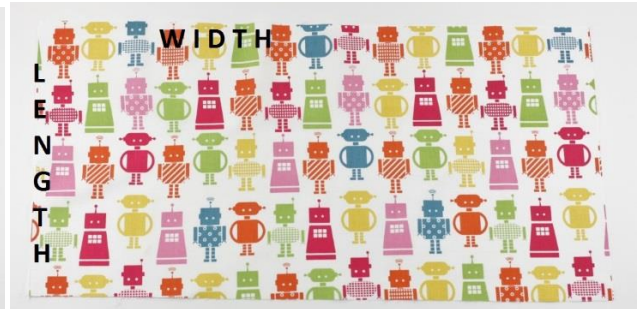
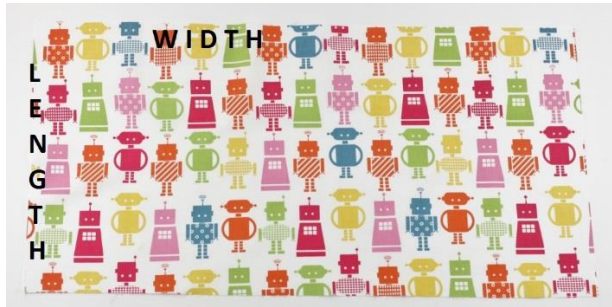
Size	Cut 2 for short Sleeves Width x Length	Cut 2 for $\frac{3}{4}$ sleeves W x L	Cut 2 for long sleeves W x L
NB	14"x6 $\frac{1}{4}$ "	14"x9"	14"x12"
3-6m	15"x6.5"	15"x10"	15"x13"
9-12m	15"x6 $\frac{3}{4}$ "	15"x11"	15"x14"
18m	15"x 7"	15"x11.5"	15"x15"
2t	15.5"x7 $\frac{1}{4}$ "	15.5"x 12"	15.5"x16"
3t	15.5"x7.5"	15.5"x13"	15.5"x17"
4t	15.5"x7 $\frac{3}{4}$ "	15.5"x14"	15.5"x18"
5t	16"x8"	16"x15"	16"x19"
6	16"x8.5"	16"x16"	16"x19.5"
7	16 $\frac{1}{4}$ "x8 $\frac{3}{4}$ "	16 $\frac{1}{4}$ "x16.5"	16 $\frac{1}{4}$ "x20"
8	16.5"x9"	16.5"x16 $\frac{3}{4}$ "	16.5"x20 $\frac{1}{4}$ "
9	16.5"x9 $\frac{1}{4}$ "	16.5"x17"	16.5"x20.5"
10	16 $\frac{3}{4}$ "x9.5"	16 $\frac{3}{4}$ "x17.5"	16 $\frac{3}{4}$ "x21"
11	17"x9 $\frac{3}{4}$ "	17"x18"	17"x21.5"
12	17 $\frac{1}{4}$ "x10"	17 $\frac{1}{4}$ "x18.5"	17 $\frac{1}{4}$ "x22"

Elastic sizing chart:

Size	Neckline elastic $\frac{1}{4}$ " width Cut 1x	Sleeve elastic for wrist $\frac{1}{4}$ " width Cut 2x	Sleeve elastic for upper and mid arm $\frac{1}{4}$ " width Cut 2x
NB	13"	6"	7"
3-6m	13"	6"	7"
9-12m	13.5"	6.5"	7.5"
18m	15"	6 $\frac{3}{4}$ "	7 $\frac{3}{4}$ "
2t	15.5"	7"	8"
3t	16"	7"	8"
4t	17"	7.5"	8.5"
5t	17.5"	7.5"	8.5"
6	18"	7.5"	8.5"
7	18.5"	7.5"	8.5"
8	19"	8"	9"
9	19 $\frac{1}{4}$ "	8.5"	9.5"
10	19.5"	9"	10"
11	19 $\frac{3}{4}$ "	9"	10"
12	20"	9"	10"

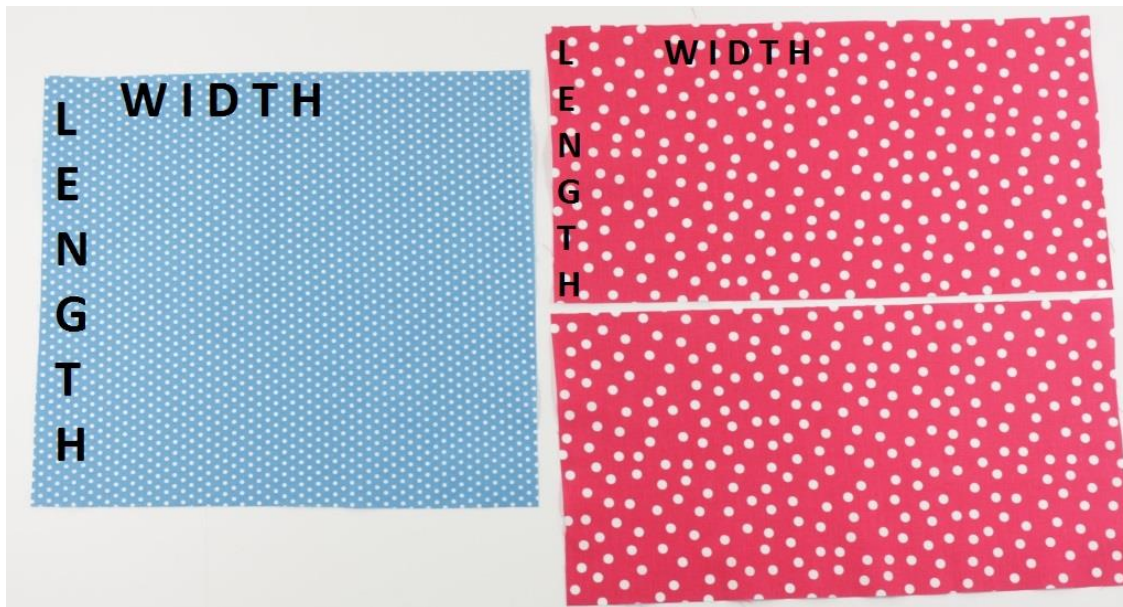
These should be the pieces you have cut out:

2 skirt parts



1 apron piece

2 sleeve pieces (short)



2 bodice pieces



NOTE: mark the bodice and the sleeves so you will know which one is which when you sew those together😊

To cut the armholes:

Take one of your bodice pieces and place it in front of you with the print direction (if applicable) going down:



Fold it over sideways so that your fabric fold is on the left. Pin the armhole cutout into the upper right corner so that the curve faces inward:

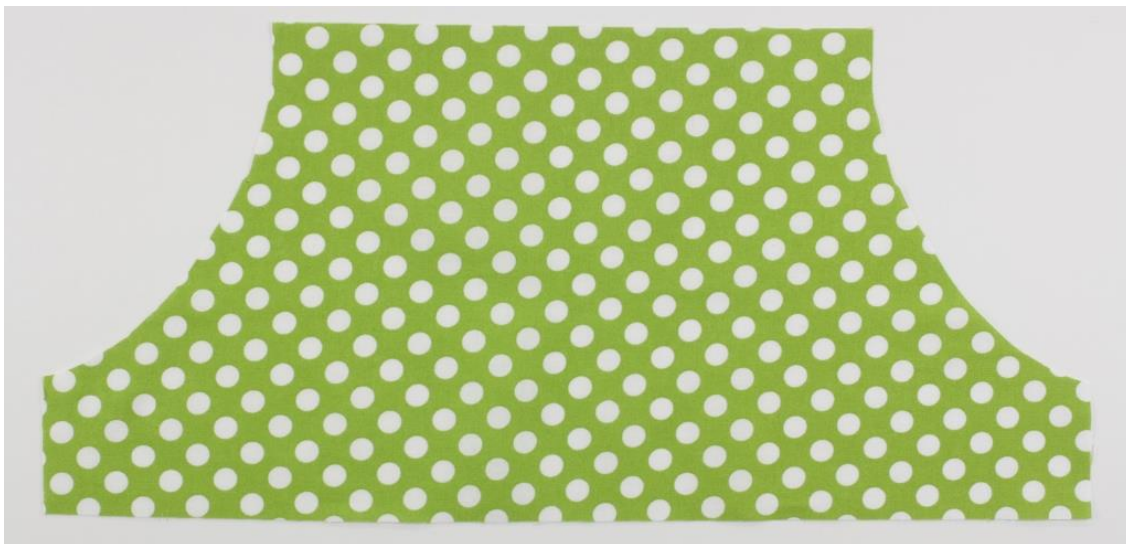


6

Cut around the armhole template. This is what your folded fabric piece looks like now:



Unfolded it looks like this:



Repeat with other bodice piece.

Lay both bodice pieces aside.

Repeat those steps with both sleeve fabric pieces. This is what your sleeve will look like once the armholes are cut out:



To sew the sleeves and bodice pieces together:

Place one bodice piece with right side up in front of you. Place one sleeve piece with right side down onto the bodice, aligning the right armhole curves. Pin in place and sew along the dashed lines. Backstitch the beginning and end:



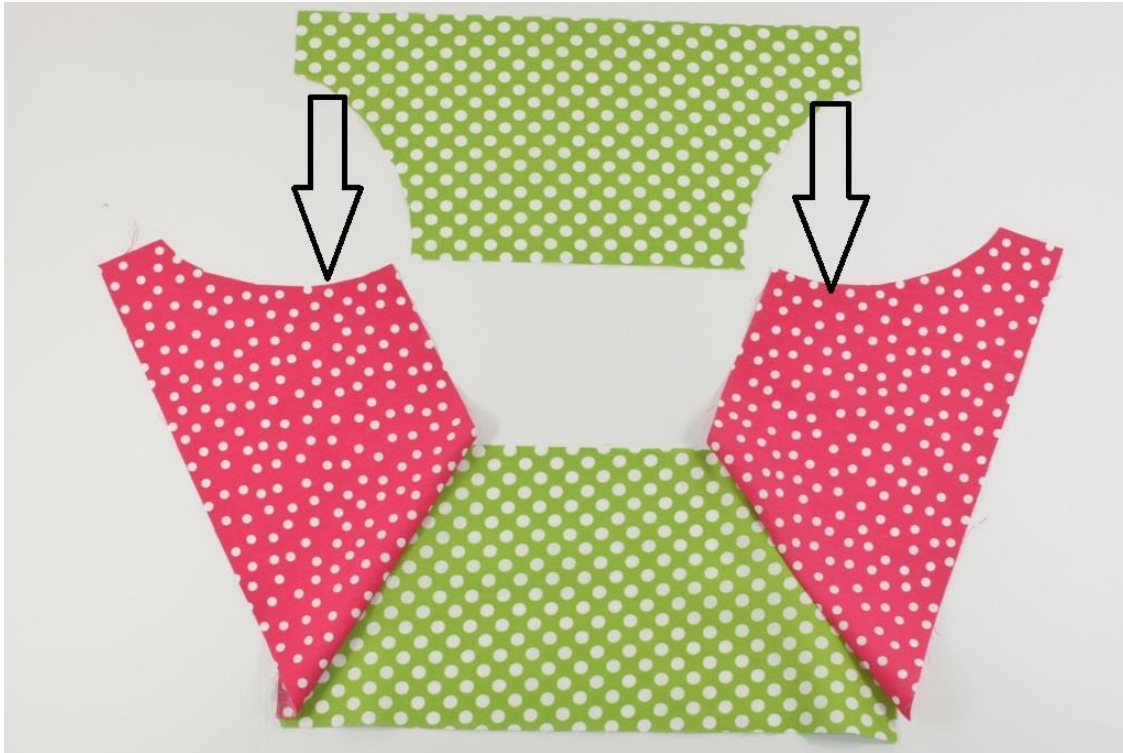
This is what your bodice with one sleeve sewn on looks like:



Take the second sleeve and pin it to the left armhole curve of your bodice with right sides together and sew:



Take your remaining bodice and sew it with right sides together, to both of the unsewn armhole curves:



Serge/zigzag stitch all raw edges:



You will now have a sewn together bodice with sleeves:



Lay it aside for now.

To make the apron:

This step is optional, if you prefer not to make the apron please skip now to the other section relevant for your dress.

Take your apron piece and place it with right side down and print direction going down, in front of you.

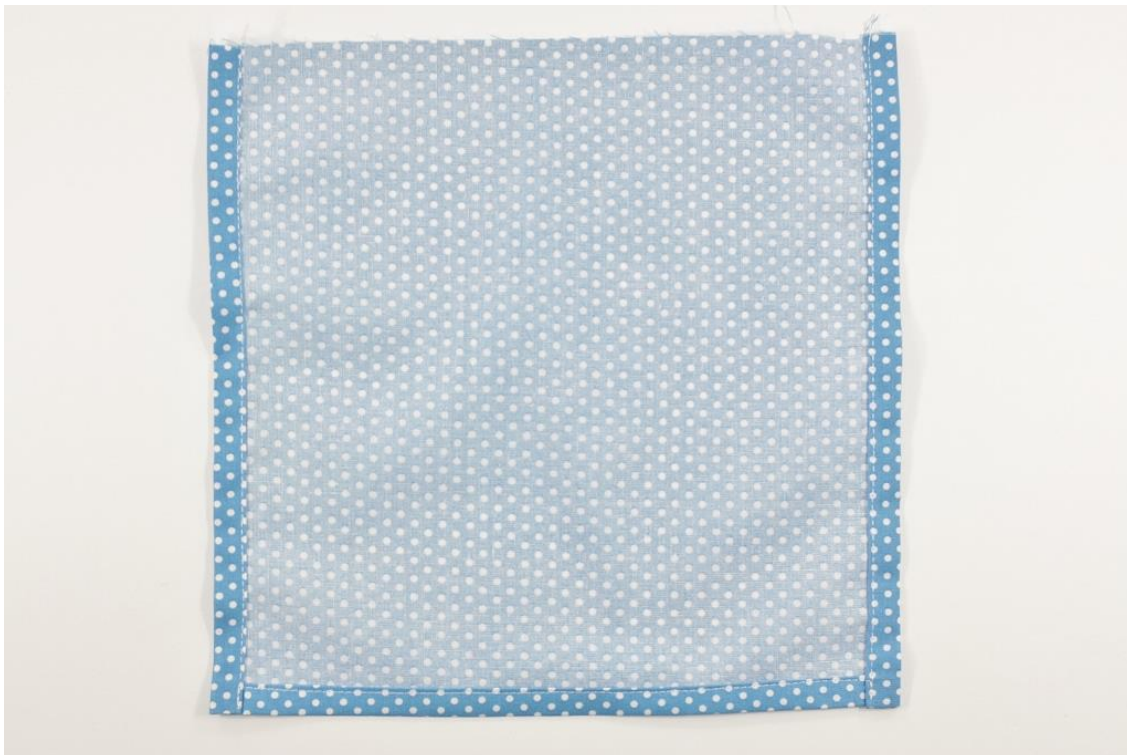
Make sure you have the apron piece the right way, it is wider on the top edge than in length. Fold up the bottom edge 0.5 inch and press:



Fold this edge up once more 0.5 inch and press. Fold both sides in the same way and pin. Sew along the dashed lines, close to the inner folded edges:



This is your finished apron:



To gather your apron:

Set your sewing machine to the longest stitch length and to the highest/strongest tension. Most machines will gather like this but some might not. For those machines you want to either use a gathering/ruffle foot or use your preferred method of gathering (not described in this tutorial, for more in depth info please do a google search on the internet).

Sew in between the folded seams along the dashed lines with a seam allowance of 1/4":



The apron should be gathered to about half its size:



Lay apron aside.

To gather the skirt part:

Set your sewing machine to the longest stitch length and to the highest/strongest tension. Most machines will gather like this but some might not. For those machines you want to either use a gathering/ruffle foot or use your preferred method of gathering (not described in this tutorial, for more in depth info please do a google search on the internet).

Sew along the upper edge with a seam allowance of $\frac{1}{4}$ ". Begin $\frac{1}{2}$ " in to the fabric and stop $\frac{1}{2}$ " before the fabric edge:



This is your gathered skirt part:



Repeat with other skirt piece.

Reset your machine to regular stitch settings.

To sew the apron on:

Take the bodice with sleeves and place it in front of you with right sides up. Mark the center of the bodice and the apron (with a pin or fabric pen). The distance to either side should be the same as shown on the black markings:



Flip the apron over and pin to the bodice. Then sew with a seam allowance of $\frac{1}{4}$ ", along the dashed line. Backstitch the beginning and end:



This is your sewn on apron:



To sew the skirt to the bodice:

Flip the apron back over the bodice and place the skirt part over it, right sides should face. Distribute the skirt's gathers to make it match the bodice width. Pin both seams together and sew with a seam allowance of 3/8" along the dashed line. Backstitch the beginning and end:



Serge/zigzag stitch the raw edge.

Fold the seam up on the inside and press it from the outside. Then top stitch along the dashed line:



Repeat with other bodice/sleeve and skirt part for the reverse side of the dress.

With right sides together, pin both sides together and sew along the dashed line. Backstitch the beginning and end:



Serge/zigzag stitch the sides.

Then serge/zigzag hem the bottom edge:



Fold up the hem 0.5" and press, then fold up once more 0.5" and press. Sew along the dashed line close to the inner folded edge. Backstitch the end:



To make the neckline casing:

Serge/zigzag stitch the neckline and sleeve edges:



Turn your dress with right sides in and fold down the top edge 0.5" and press. Over the seams it will be a bit bulky but you won't see any of those once the dress is finished. Start sewing at the center back, leaving a 1 inch opening. Backstitch when you start and sew all the way around the neckline, right over the serge/zigzag stitches. Backstitch the end:



To make the sleeve casing or hems:

As an option you can leave the sleeves loose or open. For this example dress I left the sleeves open but scroll down a bit further and you'll find a sleeve example that has inserted elastic. Fold in the sleeve hem 0.5" and press. For the open sleeve, sew the hem down right over the serged/zigzag stitches along the dashed lines. Backstitch the end:



Here is an example of encased sleeve elastic:



For this look you want to leave a 0.5 inch opening at the underside of the sleeve (right by the seam on the underside) to insert the elastic. Use the elastic chart on page 2.

To insert the neckline elastic:

Secure a safety pin to one end of the band elastic and insert it into the casing:



Once both ends meet out of the opening, overlap 0.5" and pin:



With your threaded hand sew needle sew the elastic together with 10-12 stitches. Trim off thread, add a size/care tag if preferred and close the opening with your machine. Backstitch the beginning and end:



Add some cute buttons to the front and you are all done!



Option to add a sash:



A sash allows the garment to fit a bit more snug against the body if preferred. See below how to make one:

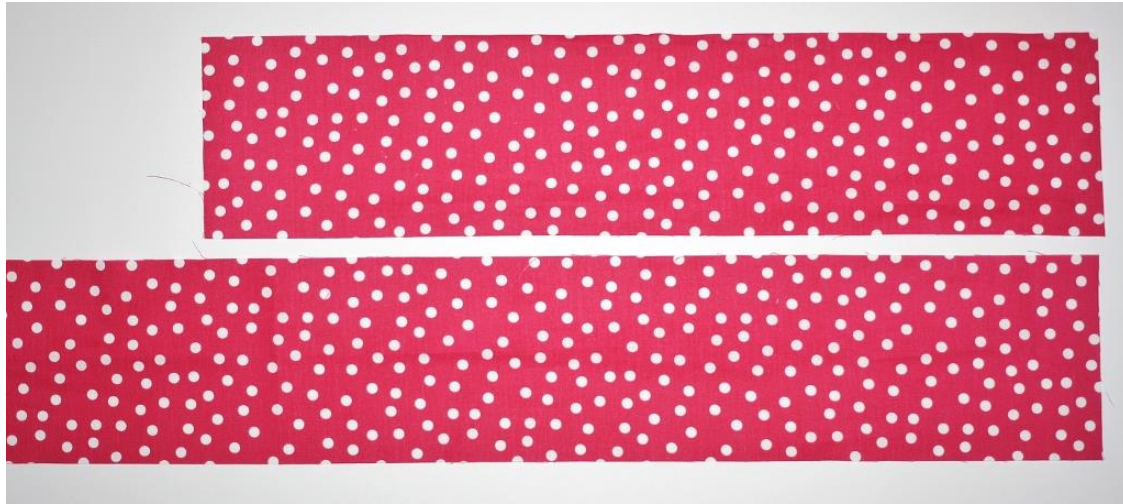
Select the size from the chart below and cut your piece (s). Best is to cut one very long piece and one shorter piece so you won't have the seam right in the center.

Sizing chart:

ATTENTION!!! Do NOT put the apron on your baby if you won't be able to watch her AT ALL TIMES!!!
The long ties could create a hazard!!!

<u>Sizes</u>	<u>width</u>	<u>x</u>	<u>length</u>
0-6m	4"	x	48" (sew 3 pieces of 16.5" together to make this length)
9m-24m	4"	x	56" (sew 3 pieces of 19" together to make this length)
2t-5t	4.5"	x	62" (sew 2 pieces of 20" together to make this length)
6-8	5"	x	70" (sew 3 pieces of 24" together.....)
9-12	5"	x	78" (sew 3 pieces of 26" together.....)

These are the pieces I have cut out:



Flip the bottom piece over and pin the right edge. Sew along the dashed line:



Unfold the seam and press open:



Secure a safety pin to the lower portion of the right side as shown:



Fold strip in half with right sides in. Pin along one small edge and the long edge. Sew along the dashed lines. Backstitch the beginning and end. Trim off the corner diagonally:



Grab the safety pin through the fabric and guide it through the sash.....



.....until it comes out. Keep pulling entire sash through:



Fold in the open end 0.5" and press entire sash flat:



Top stitch the short ends with backstitching the beginning end (continue topstitching entire sash if preferred):



Tie it around the waist and make a bow in the back. Enjoy!

Design examples:



For instant download ebooks please visit <http://whimsycouturepatternshop.blogspot.com/>

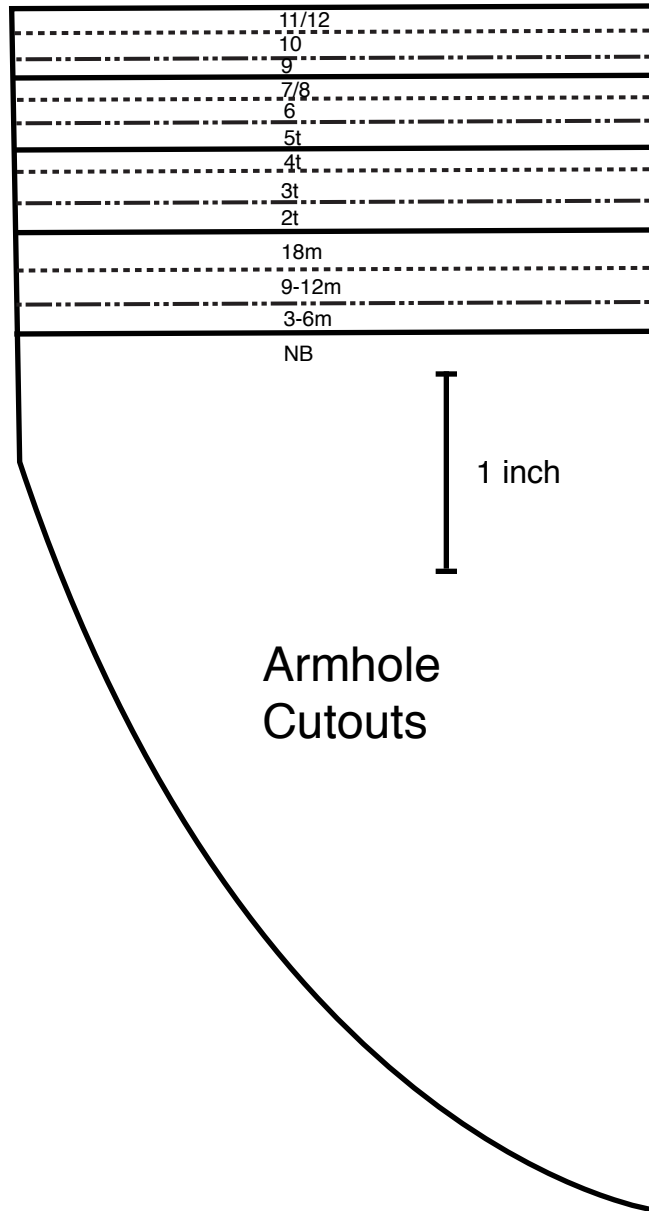
Etsy shop: www.whimsycouture.etsy.com/

Blog: <http://whimsycoutureboutique.blogspot.com/>

For questions please email whimsycouture@hotmail.com

Thank you so much for using this pattern!

Copyright © Whimsy Couture, 2014 (do not copy or distribute without my consent)



Copyright © Whimsy Couture
www.whimsycouture.etsy.com