



Majestic Pillows



Looking for a cuddly soft escape from reality? Try these Majestic pillows featuring fabrics from Majestic, a Shannon Studio Collection™. To view the complete range of fabrics, visit www.shannonfabrics.com. Here's the tutorial:

List of required materials:

- Cuddle fabric
- Sewing machine
- Stretch/knit needle (ideally size 90/14)
- Cutting mat
- Rotary cutter
- Scissors
- Lip edge ruler
- Straight pins
- Lint roller/brush
- 1 snap closure (optional), and double threaded hand sew needle (optional)
- 20 x 10 inch bolster pillow form
- 20 x 20 inch square pillow form
- 1 x 20 oz. bag loose fiberfill for ROUND SIDED PILLOW and PATCHWORK PILLOW

Seam allowance: 3/8" unless stated otherwise

TIP: to prevent too much lint while working with Cuddle, throw the cut pieces into the dryer along with a damp towel and let it spin on very low heat for 10 minutes.

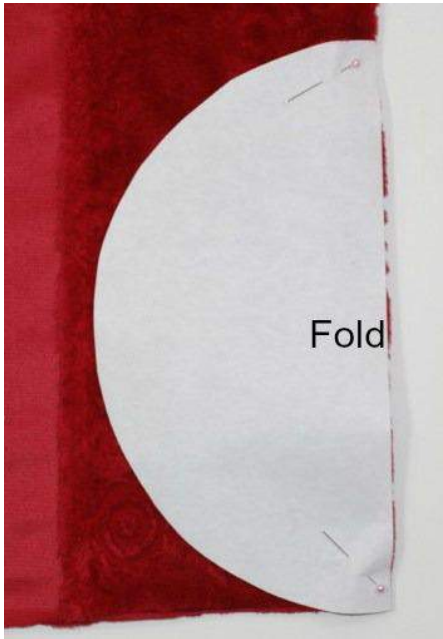
BOLSTER PILLOW COVER:



For this pillow you need a bolster form in the size of 20" long x 10" diameter.

Print out the templates and cut out the small half circle.

Fold your Cuddle fabric over and place the small half circle onto the fold and pin in place:



Cut around template:



This is now your cut circle. Cut out another one.



3

Cut out the center fabric piece in the size of 20" x 36":



Serge/zigzag stitch the short sides:



Turn your fabric with right sides down and turn the hemmed edge 1" and pin. Then sew along dashed lines:



4

Repeat to other side.

To sew circle to main piece:

Mark the center of one circle and the main piece (the folded and sewn edges are facing to the sides).

Place one circle with right side down onto the main piece, aligning the center:



Start pinning both fabric pieces from the center going to the left side.....



5

.....keep pinning along the left side.....



...until you reach the folded edge. Stop pinning there:



6

Now continue pinning from the center towards the right until you reach the excess piece of main fabric, keep pinning that piece as well over the already pinned other side:





Sew around the entire circle over the pinned area, removing the pins as you go. Backstitch the end and remove the pins.

Repeat with other circle and sew it onto the other side. Serge/zigzag stitch the raw edges. This should now be your finished bolster pillow cover:





Turn cover with right sides out and hand sew a snap button to the flap opening (optional):



Your bolster pillow cover is done. Insert form and enjoy:





ROUND SIDED PILLOW:

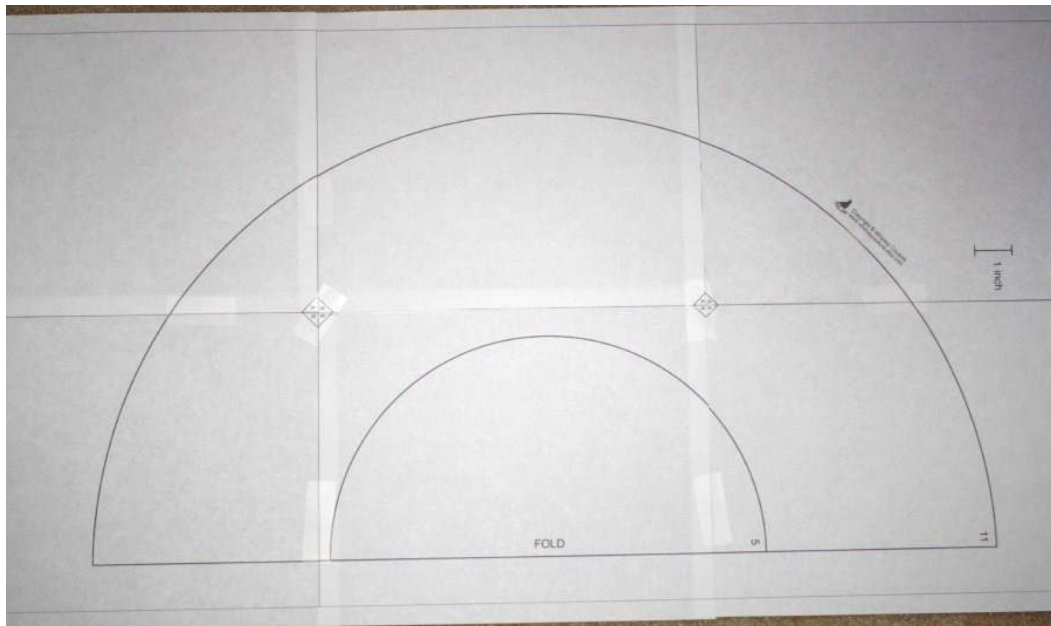


11

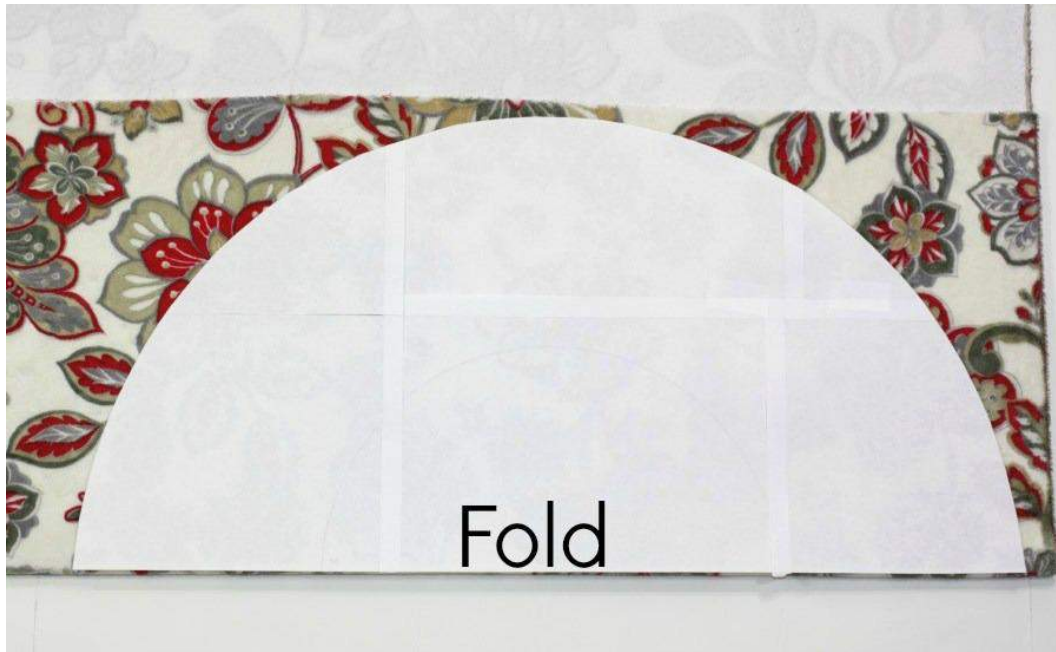
For this pillow we will need loose fiberfill such as this from Fairfield:



Cut out the large half circle from the template:



Fold your fabric over and place the half circle onto the fold and pin:



Cut out 2 fabric circles:



Cut your side fabric panels: one piece 57" x 7".....



13

... and another piece 20" x 7":



Place both side fabric panels with short and right sides together and pin. Then sew along dashed line:



Unfold strip:



To sew circles to side panels:

Repeat the same steps for this pillow as you did with the bolster pillow! Go to page 4, section “To sew circle to main piece”

Here is our example being pinned:

The short sides are only folded inwards and pinned, not sewn.



Keep pinning the first circle to the side panel and once done you want to have both short and folded edges meet (not overlap) as shown: Then sew in place along dashed line, leaving both short and folded edges unsewn:



15

This is your sewn piece:



To sew the second circle on, first pin right at the short/folded edge as shown in marked circle:



Then pin the rest. You want to have it pinned in the same way as you did with the first circle. Again, leave the short/folded edges unsewn. Now sew second circle in place:



Turn your pillow cover with right sides out and get ready for stuffing it:



17

You can stuff as little or as much as you like. The pillow can hold quite a bit of stuffing ☺

To close the opening, use your double threaded hand sew needle and stitch it closed:



This is now your finished pillow:



PATCHWORK PILLOW COVER:



This pillow cover is really simple to make and looks beautiful with different prints!

Cut out the following pieces:

Four – 11" x 11" pieces

Two – 14" x 20"



19

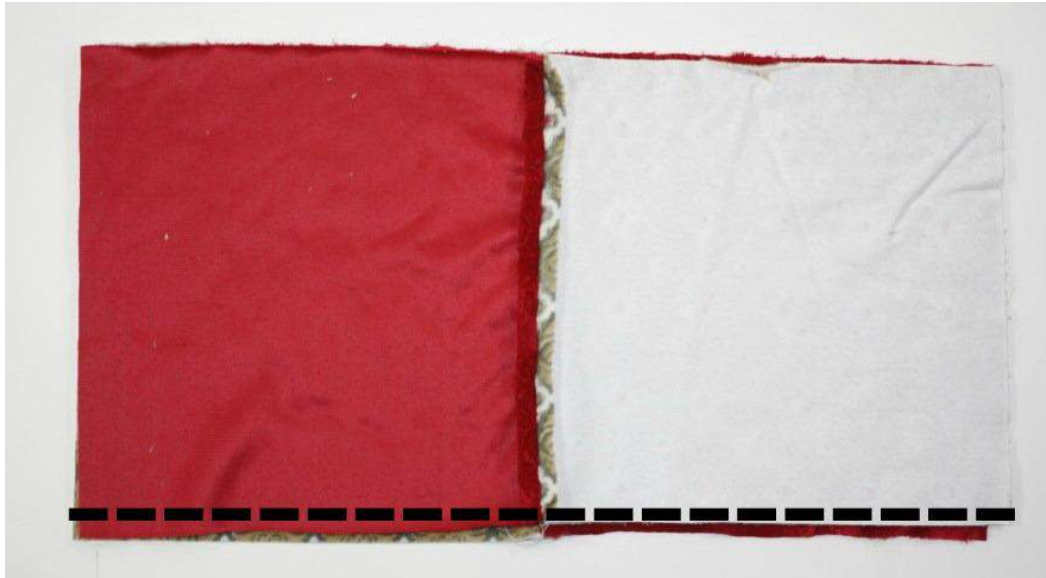
Place 2 opposite print pieces with right sides together and pin, then sew along dashed line:



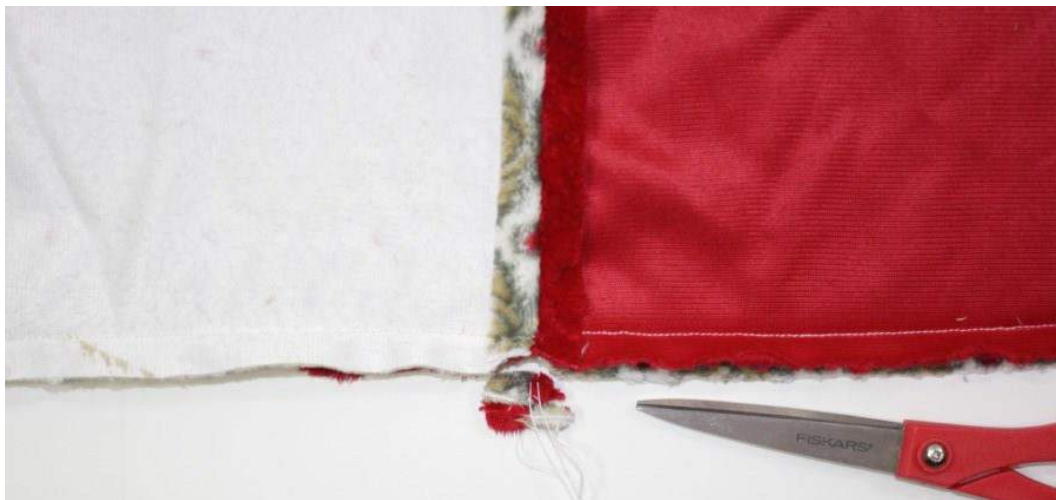
Repeat with remaining 2 opposite pieces. This is what you will have now, 2 sewn together panels:



Place those two connected panels with right sides together and pin. It is important to match the center seams carefully so they will look even. Then sew along dashed line:



Trim out a triangle shaped snippet from where all pieces meet:



This is now your finished cover side:



To make the back side take your 2 back pieces and serge/hem the inner 20" edges:



Then turn them with right sides down and fold the inner hemmed edges to either sides 1" and pin. Then sew in place along dashed lines:



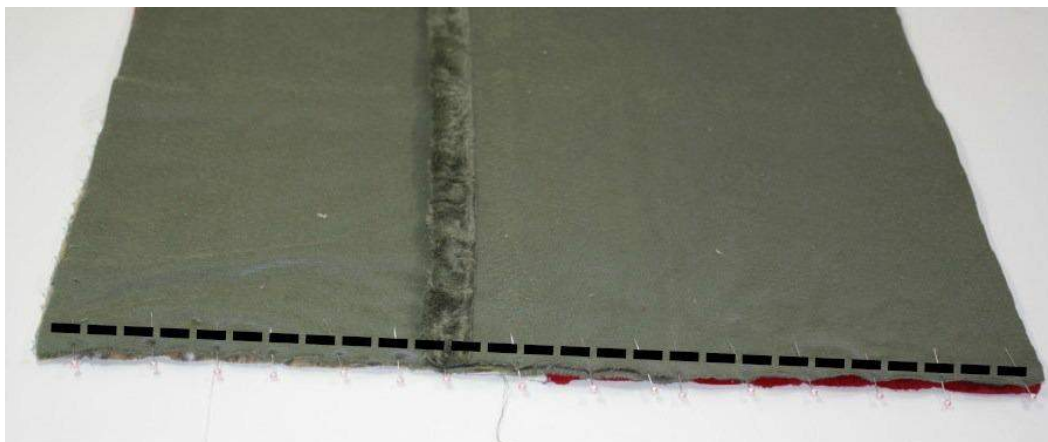
To sew front and back together place one back piece with right side down onto the front piece which is right side up as shown:



Lay the second back piece in the same fashion onto the front piece and overlap the left back piece slightly. All edges should be flush:



Pin all edges and sew along dashed lines and continue to sew all the way around. Where both back pieces overlap, sew back and forth a couple of times for more durability:



Serge/zigzag stitch the raw edges:



This is now your finished pillow cover:



Turn cover with right sides out and insert pillow form:



If preferred you may sew a snap button to the flaps to keep it closed.

All done!



For more Cuddle projects please visit the sites below.

You can find Shannon Fabrics Cuddle at your local fabric store or quilt shop. Here are a few stores across the country that carry a wide selection: Fabric Depot, Beverly's Fabrics, and Mary Jo's Cloth Store. You can also find Cuddle through many other online retailers.

Find Shannon Fabrics here:

- Website: <http://www.shannonfabrics.com/>
- Facebook: <http://www.facebook.com/ShannonFabrics>
- Twitter: <http://twitter.com/#!/ShannonFabrics>
- YouTube: <http://www.youtube.com/user/ShannonFabrics>
- Pinterest: <http://pinterest.com/shannonfabrics/>
- Flickr: <http://www.flickr.com/photos/shannonfabrics>

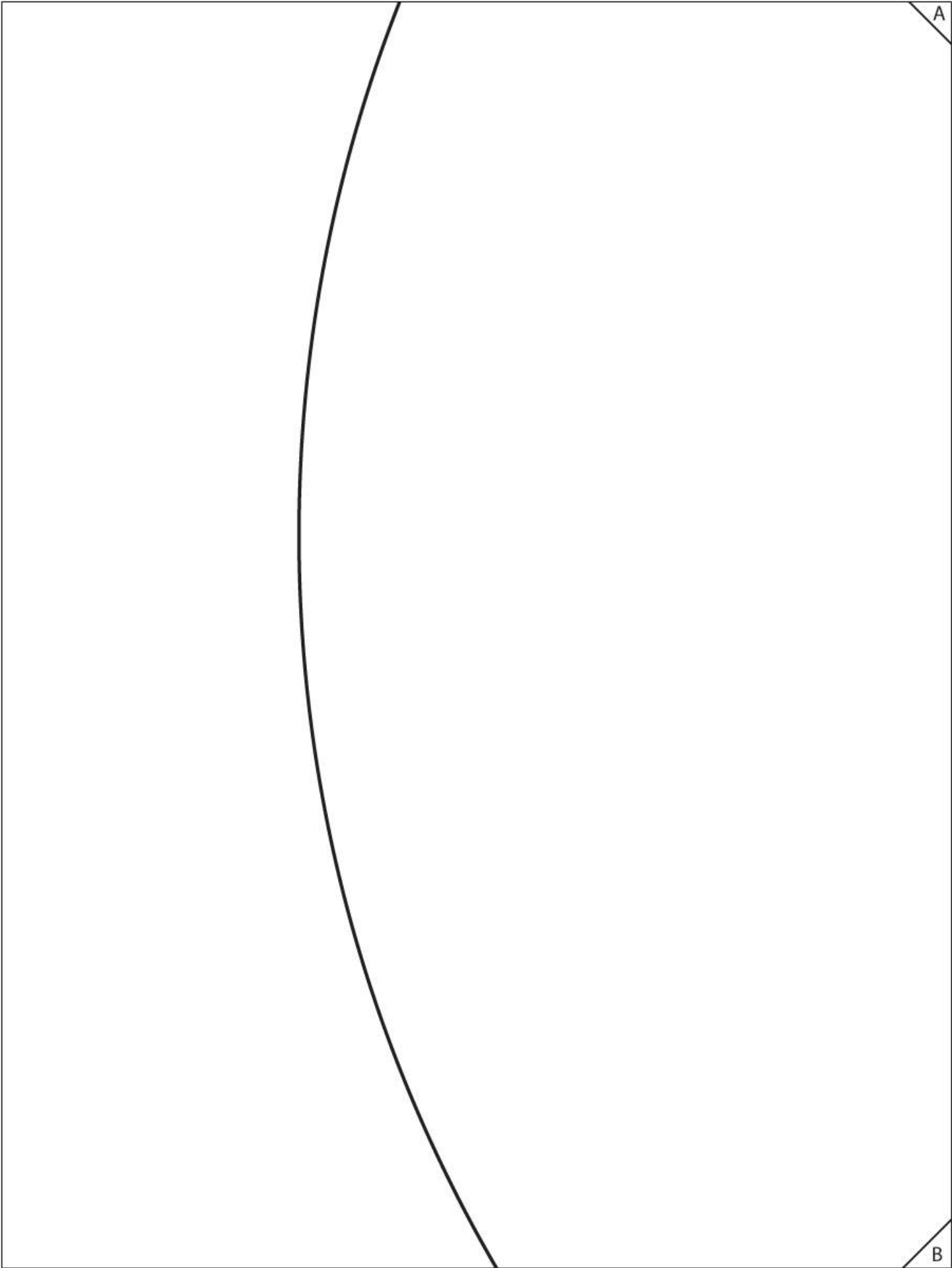
Find Whimsy Couture™ here:

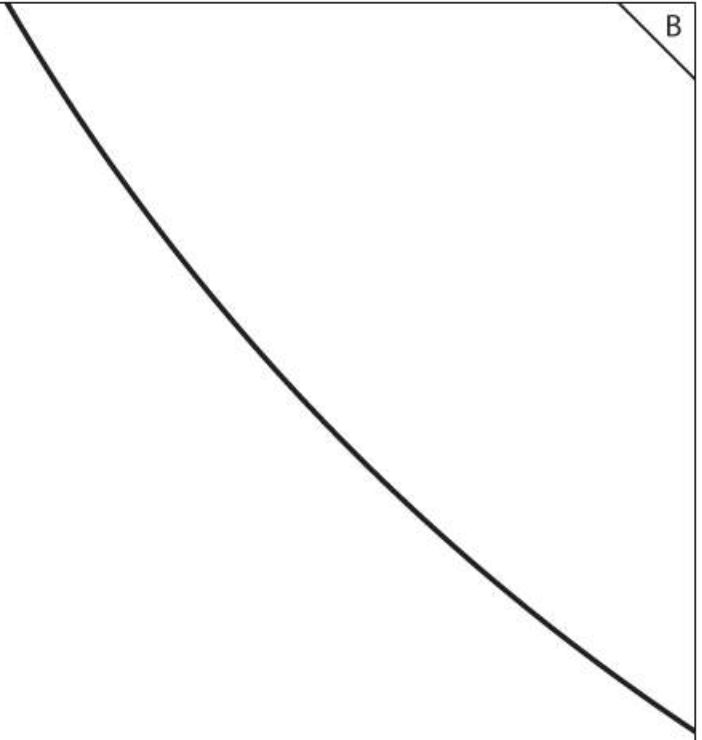
- Pattern shop: www.whimsycouturepatternshop.blogspot.com/
- Etsy shop: www.whimsycouture.etsy.com/
- Facebook: <http://www.facebook.com/WhimsyCoutureSewingPatterns>
- Pinterest: <http://pinterest.com/whimsycouture/>

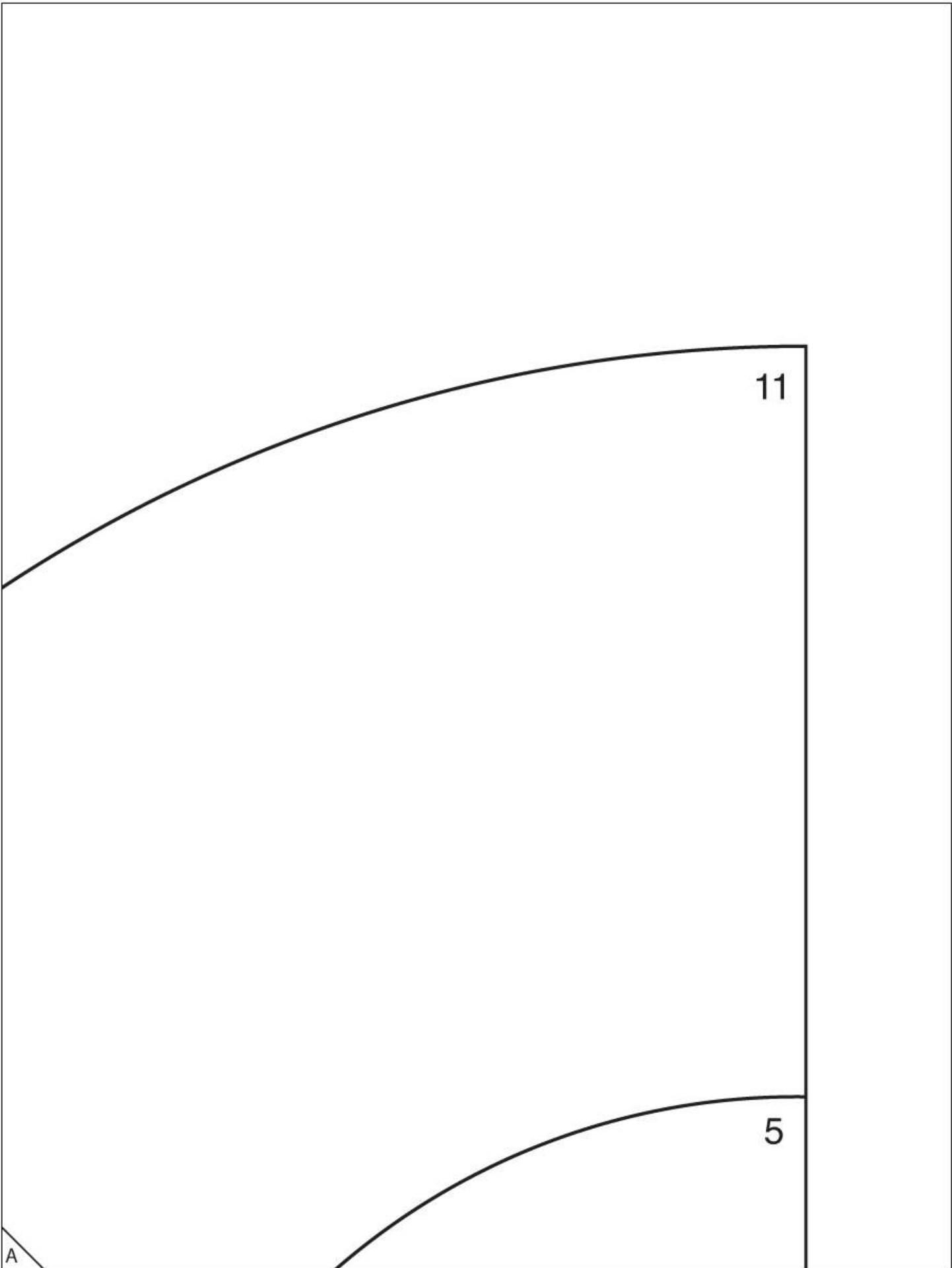
1 inch

Copyright © Whimsy Couture
www.whimsycouture.etsy.com

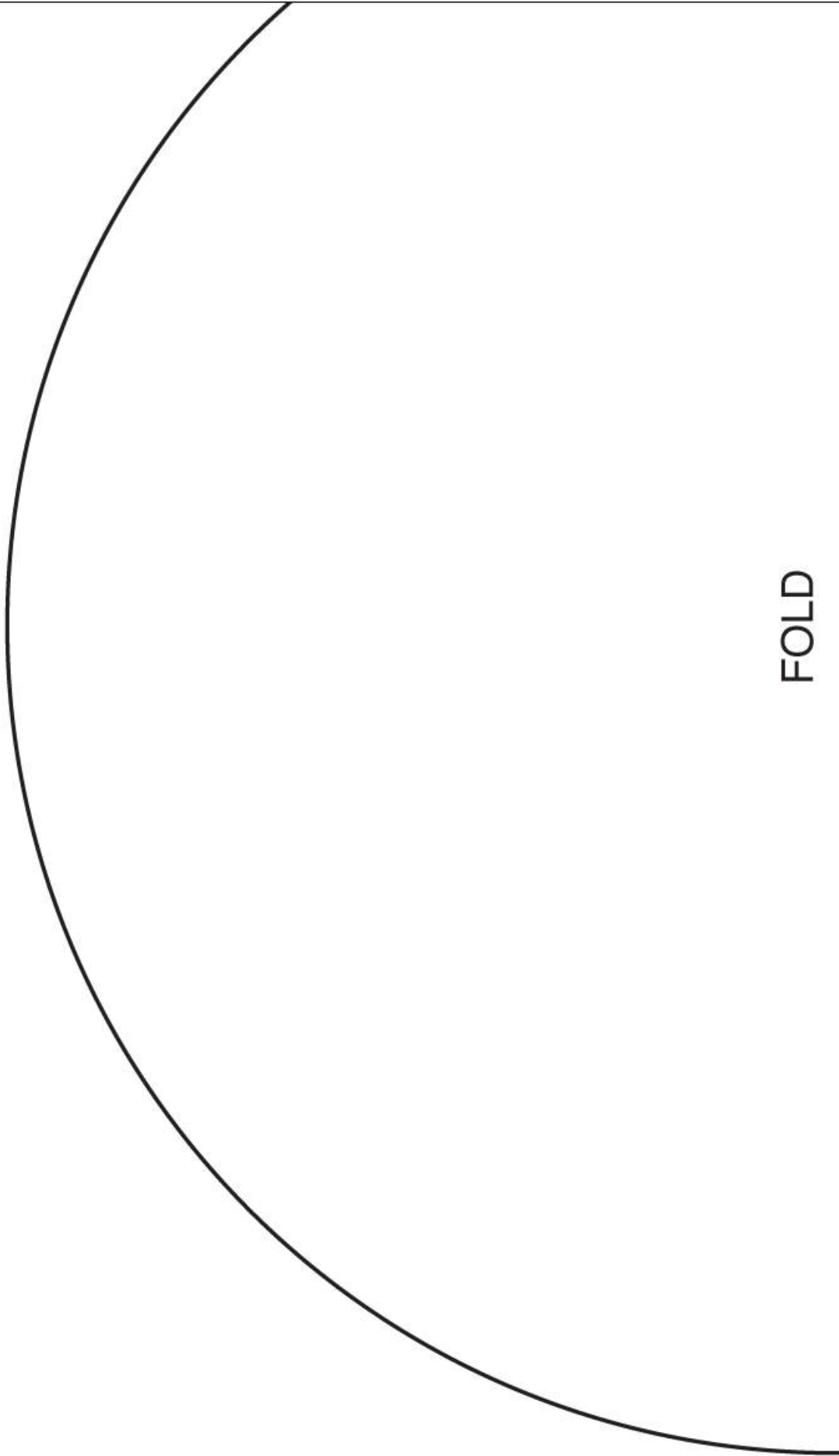
A







A



FOLD

B

B

